

## AXIS Camera Companion

Surveillance made simple.



- > High-definition identification
- > Easy to install and use
- > No central PC or DVR needed
- > Secure remote access to video
- > Apps for iPhone, iPad and Android
- > Scalable and future-proof

AXIS Camera Companion is the market's easiest video surveillance solution for small systems typically 1-4 cameras and with support up to 16 cameras. With AXIS Camera Companion, all video is recorded on SD cards in the cameras, and no DVR or server is necessary - making each camera a smart, independent video recording device. The system consists of standard Axis cameras, SD cards, software clients for PC and smartphones, and standard network equipment.

AXIS Camera Companion offers HDTV quality for reliable identification of people and incidents. Video clips or snapshots can be easily exported. Secure, remote access is easy to set up, and with support for apps for iPhone, iPad and Android, AXIS Camera Companion lets the user view video at any time, from anywhere.

AXIS Camera Companion removes the single point of failure which is common in alternative solutions where a DVR failure prevents all cameras from being recorded. The cameras in an AXIS Camera Companion system record video regardless of the network status.

The free PC client is only needed during installation. For viewing live or recorded video, or exporting video after an incident, either the client or a smartphone app can be used.

AXIS Camera Companion is a scalable and future-proof network video solution that protects the customer's investment. Adding new cameras to the system is easy, and existing analog cameras can be integrated using Axis video encoders.



Mobile viewing apps for iOS and Android

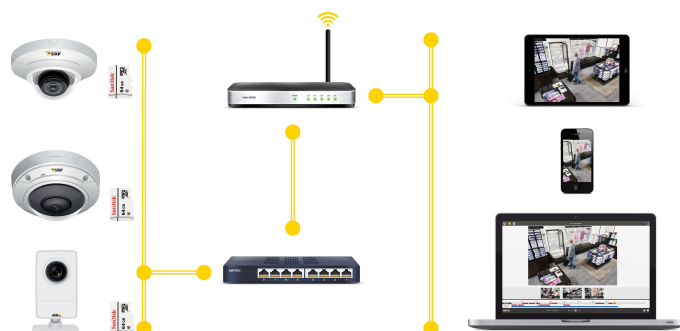


# Technical Specifications — AXIS Camera Companion

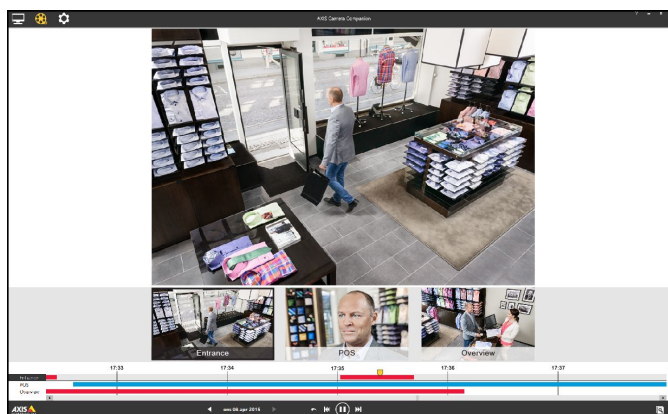
<b>General</b>	
<b>Languages</b>	English, UK English, Arabic, Brazilian Portuguese, Czech, Dutch, Finnish, French, German, Italian, Japanese, Korean, Polish, Russian, Simplified Chinese, Traditional Chinese, Spanish, Swedish and Turkish
<b>Number of channels</b>	1 to 16 cameras per site
<b>Compatible products</b>	Axis network cameras and encoders with firmware 5.40 or later
<b>Video</b>	
<b>Video compression</b>	H.264 (MPEG-4 Part 10/AVC)
<b>Resolutions</b>	Supports all camera resolutions
<b>Frame rates</b>	Supports all camera frame rates
<b>Audio</b>	One-way audio streaming, AAC audio compression
<b>Storage</b>	
<b>Storage Media</b>	AXIS Surveillance microSDXC Card 64 GB Storage option: Network-Attached Storage (NAS)
<b>Storage capacity</b>	Configurable retention recording, duration can be limited per camera to conform to local legal requirements
<b>Live view</b>	
<b>Camera live view</b>	Live view of up to 16 cameras 1, 4, 9 and 16-split views and full screen, Panoramic view, Multiview streaming, Axis' Corridor Format, Camera sequence, Digital zoom
<b>PTZ</b>	Control of PTZ and dome cameras using mouse or joystick

<b>Playback</b>	
<b>Search for recordings</b>	Search for recordings based on camera, Date and time Timeline visualization
<b>Playback</b>	Playback speed: up to 8x or frame by frame
<b>Export</b>	
	Single images in JPEG or video sequences in ASF, Installation-free standalone player included, Digital signature on exported recordings
<b>Recording control</b>	
<b>Motion detection</b>	Advanced camera-based motion detection for low bandwidth utilization
<b>Continuous and scheduled</b>	Schedule per camera allows continuous recording or customization of weekday and weekend recordings
<b>System</b>	
<b>PC Client</b>	Download from: <a href="http://www.axis.com/companion">www.axis.com/companion</a>
<b>System recommendations</b>	OS: Windows 8 64-bit CPU: Intel Core i5 RAM: 4 GB Graphics card: 256 MB onboard video memory Network: 100 Mops Uninterruptible Power Supply (UPS)
<b>Mobile access</b>	Axis mobile viewing apps for Android devices, iPhone and iPad
<b>Mobile device minimum requirements</b>	Android 4.1 iOS 7
<b>Required equipment</b>	Power over Ethernet switch, Ethernet cables, PC, SD cards and/or NAS. For remote and/or wireless access a router is also required
<b>Security</b>	Multiple user access levels with password protection

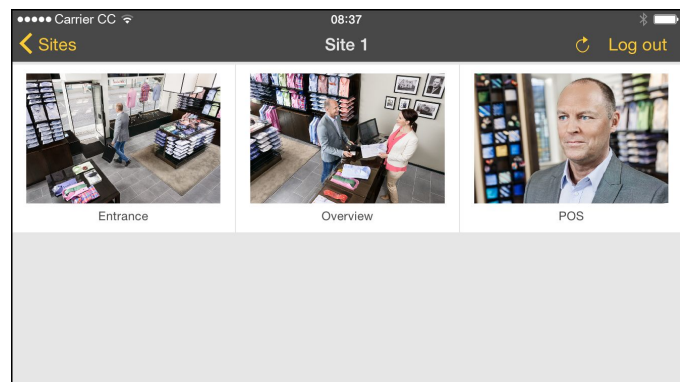
## System setup example



## PC Client: Recording view



## Mobile App: Site view



## Mobile App: Recording view

