

# Installer testimonials

"The ease with which our clients can get up and running with AXIS Camera Companion means we can install it for more clients in one day. Our customers are all delighted with the added flexibility of monitoring their shops in HD from their smartphone, at an appealing price."

- Matt Morrell, Director, Safe Simple Secure Limited

"Perhaps the best thing about AXIS Camera Companion is that you get all the high quality of Axis cameras and innovative edge storage technology, combined in a solution that's easy to install and at the right price."

- Ben Aspland, project manager, Obsidian Security

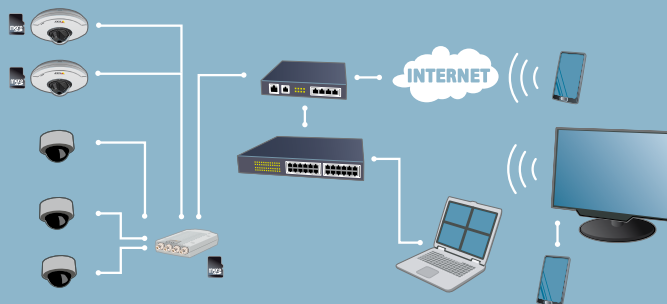
See for yourself at [www.axiscameracompanion.com](http://www.axiscameracompanion.com)

## Axis video encoders – Flexible solutions to meet any customer need

### A cost-effective migration path for your traditional CCTV customers

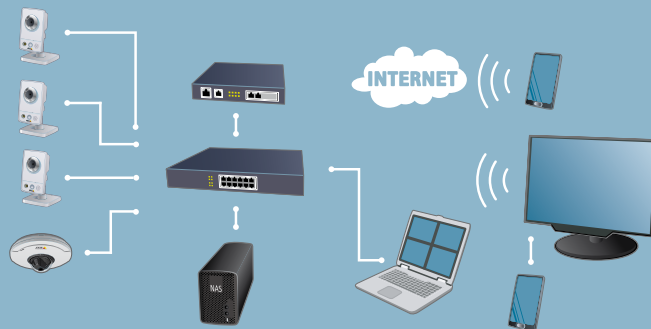
With Axis video encoders, any time is the right time to transition your traditional analog customers to network video. Using a video encoder with AXIS Camera Companion allows your customers to get the most out of their analog equipment investment, while adding the possibility to view live and recorded video from their smartphone or tablet. More importantly, you can seamlessly integrate additional Axis network cameras as your customers' business and video surveillance needs grow.

A typical AXIS Camera Companion installation including a mix of network and analog cameras with video encoder support



## Network Attached Storage (NAS) – Additional storage and camera options

As an alternative to local video recording to an SD/SDHC card, AXIS Camera Companion is compatible with Network-Attached Storage (NAS) recording. This expands the range of Axis cameras that can be supported in the AXIS Camera Companion system to include models without built-in SD card compatibility. NAS recording also offers more robust storage and archiving possibilities for customers who have high scene activity, require continuous recording in HDTV, or need to archive video for longer time periods.



## About Axis Communications

As the market leader in network video, Axis is leading the way to a smarter, safer, more secure world — driving the shift from analogue to digital video surveillance. Offering network video solutions for professional installations, Axis' products and solutions are based on an innovative, open technology platform.

Axis has more than 1,400 dedicated employees in 40 locations around the world and cooperates with partners covering 179 countries. Founded in 1984, Axis is a Sweden-based IT company listed on NASDAQ OMX Stockholm under the ticker AXIS. For more information about Axis, please visit our website [www.axis.com](http://www.axis.com).

# AXIS Camera Companion

The easiest way to network video surveillance





- > **Video surveillance that supports today's modern consumer technology**
  - HDTV image quality
  - Remote viewing from iPhone, iPad or Android device
- > **Cost-effective and flexible solutions**
  - Many cameras to choose from
  - Encoder support for your analogue customers
  - Scalable for future add-on sales
- > **Quick and easy installation**
- > **Minimum support**
- > **Developed by Axis Communications, the world market leader in network video**



# Give small business customers what they're looking for.

Your customers are smart.

They have HDTV and smartphones.

They want video surveillance technology that supports today's modern consumer electronics.

And they're looking for trusted security professionals who can provide it.

Be among the first to make the benefits of IP video surveillance easily available to small-business customers. With exceptional HDTV image quality, mobile live viewing, easy-to-use interface, and affordable pricing, AXIS Camera Companion is attractive for both existing and new customers.

## Discover the unique AXIS Camera Companion concept

### What makes AXIS Camera Companion unique?

Each camera records video to its own internal SD memory card. Your customers no longer need to invest in a DVR, NVR or even a PC to manage their video surveillance. Simply mount the cameras and the system is ready to go.\*

And the free AXIS Camera Companion software client makes accessing the system easy. Customers can view real-time video with HDTV image quality anywhere, anytime on a smartphone, tablet, laptop or remote computer.

### Earn more and make life easier for yourself

With its appealing customer benefits, easy installation, minimum maintenance, and attractive price point, AXIS Camera Companion just makes good business sense.



\*Local recording on SD card is sufficient for most customer storage needs. AXIS Camera Companion is also compatible with Network Attached Storage (NAS) video recording.

# AXIS Camera Companion with SD card support is easy to install and use

1



Insert SD card in the camera

2



Mount the cameras and install cabling

3



Connect cameras to Power over Ethernet (PoE) switch

4



Connect the switch to a router (optional) for internet access and remote viewing functionality

5



Automatically install and configure your system with the AXIS Camera Companion Wizard

6



View, administer and control the system securely anywhere via SmartPhone, tablet or PC

## Say farewell to the DVR!

### Local recording to meet most small business needs

Axis cameras with built-in SD card compatibility allow users to record up to full frame rate HDTV quality video at the edge, removing the need to use a centralized recording device. Advantages of local recording include:

- > High quality video recording – even for applications with limited bandwidth
- > Lower running costs thanks to minimal power consumption
- > No moving parts for years of reliability
- > Easy to scale
- > Less kit means less expense
  - an attractive offer for even the most cost-conscious customers

### How much storage is needed?

A 64GB SD card typically stores up to a month of video, which is sufficient for most small business needs. Individual storage needs may vary – see the AXIS Design Tool on [www.axis.com](http://www.axis.com) for more information.

