

SD Memory Card Installation/Upgrade Guide

Model No. **KX-TDA5920/KX-TDA0920**
KX-TDA6920

KX-TDA5920: PSMPR Software File Version 5.0000 or later
KX-TDA0920: PMPR Software File Version 5.0000 or later
KX-TDA6920: PLMPR Software File Version 5.0000 or later

In this manual, the suffix of each model number (e.g., KX-TDA50G) is omitted unless necessary.

Table of Contents

1	Preparation	3
1.1	Introduction	3
1.1.1	KX-TDA5920/KX-TDA0920/KX-TDA6920 Features	4
1.2	Before Installing SD Memory Card for Software Upgrade	5
2	Installing the SD Memory Card in a New Hybrid IP-PBX	6
2.1	Procedure	6
3	Upgrading a Hybrid IP-PBX from a Previous Version of System Software (KX-TDA50/KX-TDA100/KX-TDA200 only)	9
3.1	Procedure	9
3.2	Data Reset After Upgrade	14
4	Restoring a Hybrid IP-PBX to a Previous System Version (KX-TDA50/KX-TDA100/KX-TDA200 only)	15
4.1	Procedure	15

1 Preparation

Please read the information in this section before installing or upgrading the SD Memory Card.

1.1 Introduction

This leaflet provides procedures for installing the SD Memory Card for Software Upgrade in a new Hybrid IP-PBX, and also for upgrading system software from a previous version.

The types of SD Memory Card are as follows:

SD Memory Card	Supported PBX
KX-TDA5920	KX-TDA50
KX-TDA0920	KX-TDA100/KX-TDA200
KX-TDA6920	KX-TDA600

These procedures involve transferring files between the Hybrid IP-PBX, the SD Memory Card, and a PC running Maintenance Console.

At any point during a procedure, you can use the SD Card File View and Load option from Maintenance Console's Utility menu to view the header information of files on the SD Memory Card. This allows you to confirm that the correct versions of relevant files have been copied to the SD Memory Card.

The procedures described in this leaflet use the following files, contained on the SD Memory Card:

Type	File	Description
System data file	DSSYS (KX-TDA5920) DSYS (KX-TDA0920) DLSYS (KX-TDA6920)	User-set PBX system data
MPR file	PSMPR (KX-TDA5920) PMPR (KX-TDA0920) PLMPR (KX-TDA6920)	Hybrid IP-PBX main software
Language files	DLNGx (x=0-2)	Extension LCD language data
Default value files	DSlxxx (KX-TDA5920) DIxxx (KX-TDA0920) DLlxxx (KX-TDA6920)	Default value data files
Feature access file	DSKEYSD (KX-TDA5920) DKEYSD (KX-TDA0920) DLKEYSD (KX-TDA6920)	Enhanced feature access file

Throughout this leaflet, the files above are referred to by their type. Make sure to confirm the file name relevant to your SD Memory Card.

CAUTION

- The SD Memory Card poses a choking hazard. Keep the SD Memory Card out of reach of children.
- In order to avoid possible corruption of data on the SD Memory Card, please ensure that the "SD ACCESS" LED is off before pressing the Reset Button.
- Before touching the System Initialize Switch, discharge static electricity by touching ground or wearing an earthing strap.

Notice

The SD Memory Card must be inserted in the SD Memory Card slot of the Hybrid IP-PBX before start up.

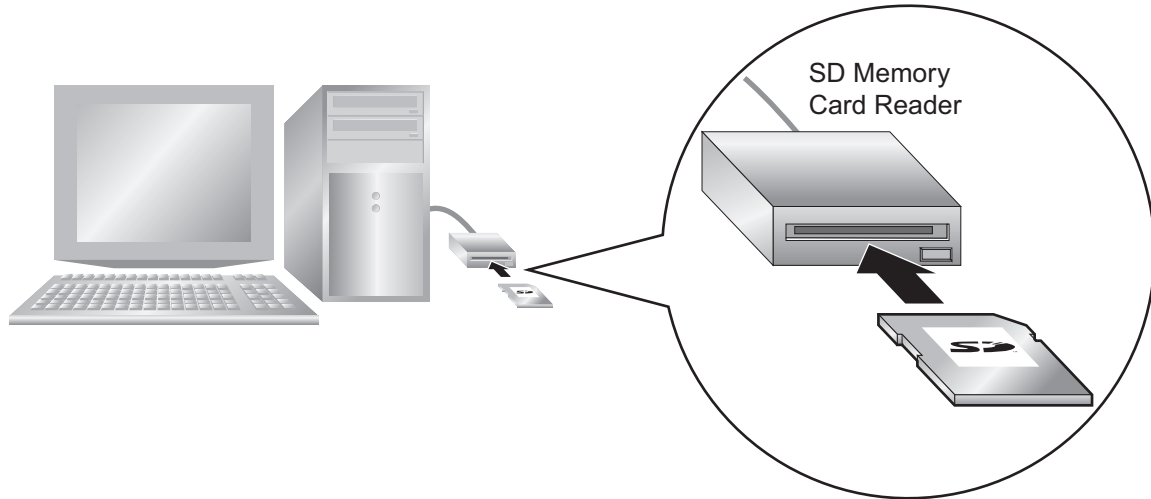
1.1.1 KX-TDA5920/KX-TDA0920/KX-TDA6920 Features

The KX-TDA5920/KX-TDA0920/KX-TDA6920 allow access to the following enhanced features. For details on these features, see the Feature Manual.

- Enhanced CTI functions
- Network Direct Station Selection (NDSS)
- Automatic Call Distribution (ACD)
- Cellular Phone Features
 - Call Transfer from Outside Destination
 - DISA Automatic Walking COS
 - Outside Destinations in Incoming Call Distribution Group
- Centralized Voice Mail
- Common extension numbering plan for two PBXs in a network
- Network ICD Group
- PS Roaming by ICD Group

1.2 Before Installing SD Memory Card for Software Upgrade

Back up the feature access file



The feature access file stored on the SD Memory Card contains data necessary to use the new features. If this file is damaged, or accidentally deleted, these new features will not function. Using an SD Memory Card Reader, back up all of the files and folders on the SD Memory Card, including this file, to a PC. The contents of this file are different for every SD Memory Card, so you must back up each SD Memory Card separately.

2 Installing the SD Memory Card in a New Hybrid IP-PBX

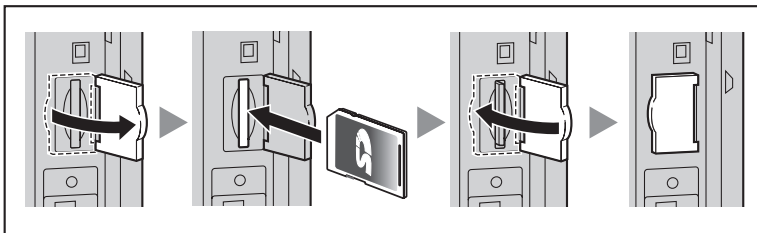
Before using the SD Memory Card for Software Upgrade, it is necessary to prepare the correct system data files using a connected PC.

2.1 Procedure

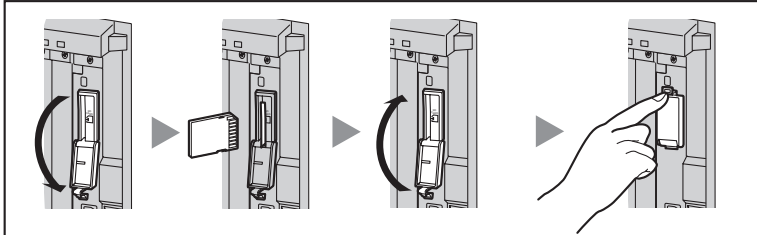
Before beginning the install procedure, make sure that power is not supplied to the Hybrid IP-PBX, and the latest version of Maintenance Console is installed to the PC.

1. Install the SD Memory Card in the SD Memory Card slot of the PBX.

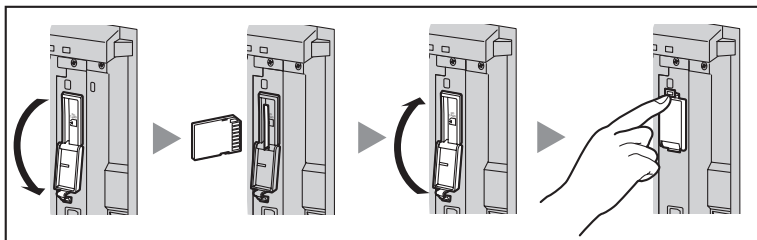
KX-TDA50



KX-TDA100/KX-TDA200

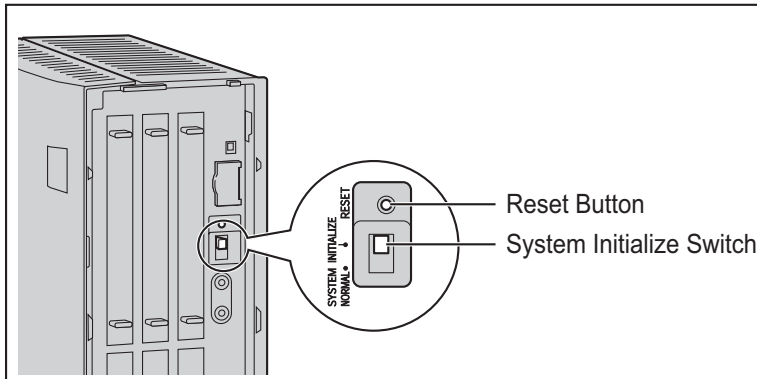


KX-TDA600

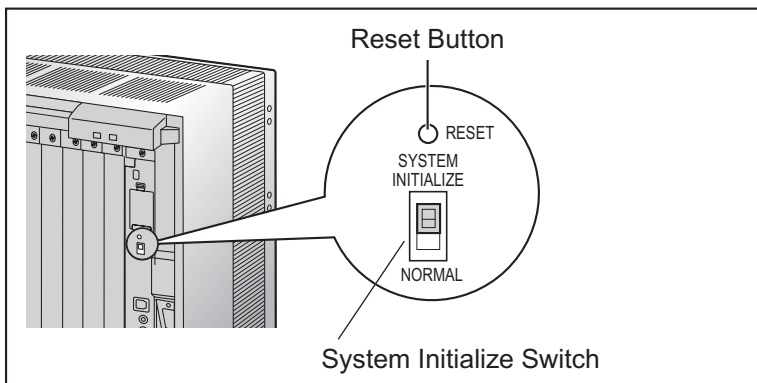


- Slide the System Initialize Switch to the "SYSTEM INITIALIZE" position.

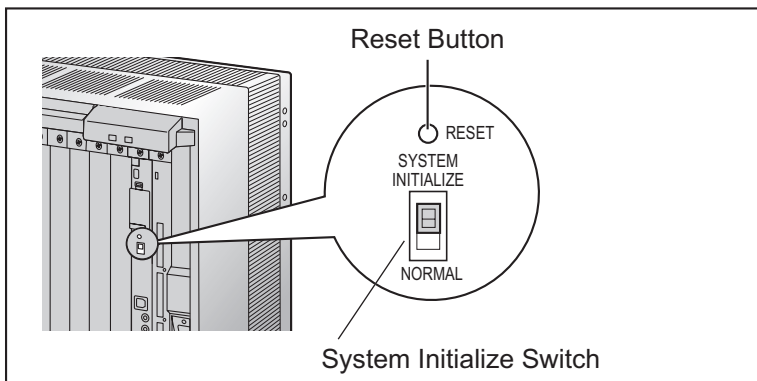
KX-TDA50



KX-TDA100/KX-TDA200



KX-TDA600

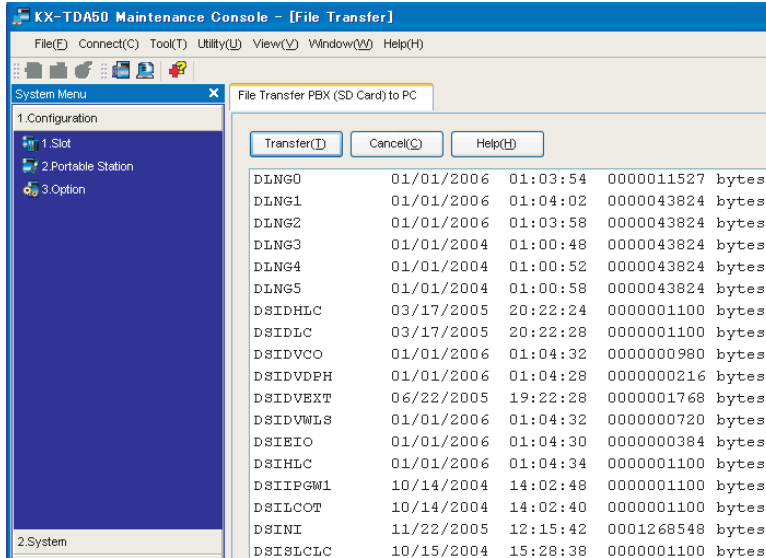


- Turn on the power to the PBX.
- While the RUN indicator is flashing, slide the System Initialize Switch back to the "NORMAL" position. Initialization may take about 1 min to 3 min. When initialization is complete, the RUN indicator will stop flashing and turn on.
- Connect to the PBX using Maintenance Console. Quick Setup will start automatically.
- Set the data items as prompted. Quick Setup will finish.

Backing Up the feature access file

If the contents of the SD Memory Card have not been previously backed up to the PC using an SD Memory Card Reader, it is strongly recommended to back up the feature access file after Quick Setup is complete. Follow the procedure below:

1. From Maintenance Console's **Utility** menu, select **File Transfer PBX (SD Card) to PC**.



Note

The screenshot shown here is for reference only, and may differ from the display on your PC.

2. Select **DSKEYSD** (KX-TDA50), **DKEYSD** (KX-TDA100/KX-TDA200) or **DLKEYSD** (KX-TDA600) from the list of files.
3. Click **Transfer**.
The Save dialog box will be displayed.
4. Navigate to the folder in which you want to save the file.
5. Enter a file name.
6. Click **Save**.
A window showing the download process will be displayed.
A message will be displayed when the transfer is complete.
7. Click **OK**.

The Hybrid IP-PBX can now be programmed for the customer.

3 Upgrading a Hybrid IP-PBX from a Previous Version of System Software (KX-TDA50/ KX-TDA100/KX-TDA200 only)

To upgrade the system software of the Hybrid IP-PBX from a previous version while keeping the current user data, it is necessary to follow the procedure below.

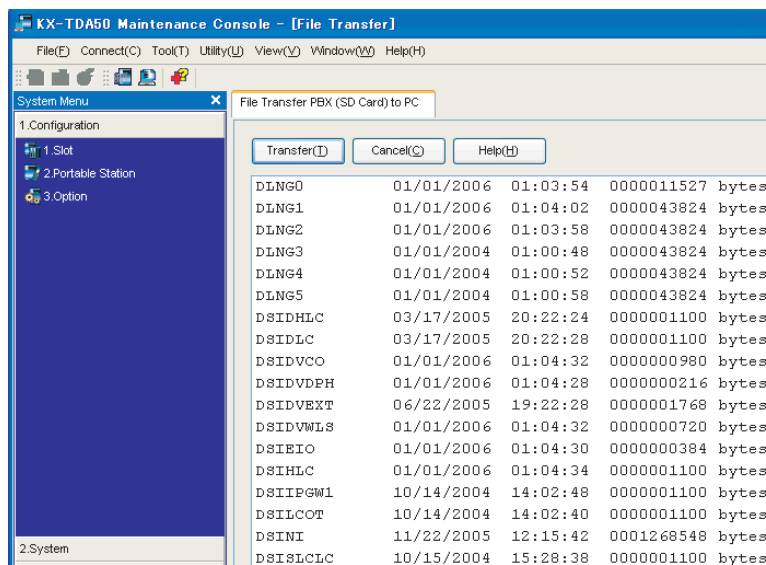
3.1 Procedure

Before beginning the upgrade procedure, make sure that both the latest and previous versions of Maintenance Console are installed to the PC.

Note

- Certain user data is cleared during the upgrade process.
For a list of all items cleared during upgrade, see “3.2 Data Reset After Upgrade”.
- The screenshots shown here are for reference only, and may differ from the displays on your PC.

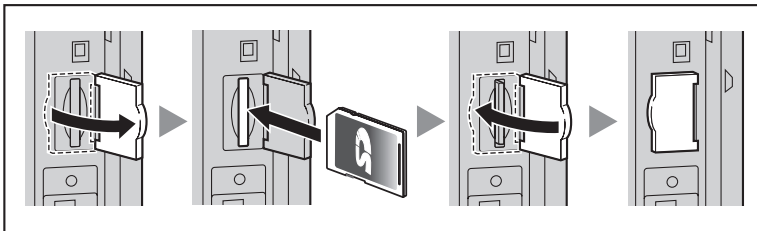
1. Back up the current user data.
 - i. Back up the current system data file from the PBX to the SD Memory Card.
 1. Connect to the PBX using Maintenance Console.
The appropriate version of Maintenance Console will be selected automatically.
 2. From the **Tool** menu, select **SD memory backup**.
The current system data file will be copied from the PBX to the SD Memory Card.
 - ii. Copy the current system data file from the SD Memory Card to the PC.
 1. From the **Utility** menu, select **File Transfer PBX (SD Card) to PC**.



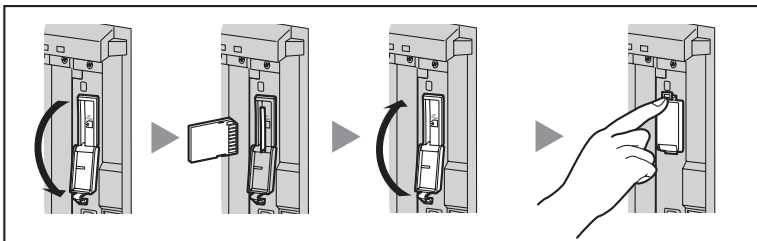
2. Select **DSSYS** (KX-TDA50) or **DSYS** (KX-TDA100/KX-TDA200) from the list of files.
3. Click **Transfer**.
The Save dialog box will be displayed.
4. Navigate to the folder in which you want to save the file.
5. Enter a file name.

6. Click **Save**.
A window showing the download process will be displayed.
A message will be displayed when the transfer is complete.
 7. Click **OK**.
 8. From the **File** menu, select **Exit**.
 9. Click **OK**.
The Maintenance Console software will close. This step is necessary to switch to the current version of Maintenance Console.
2. Upgrade the current user data.
 - i. Convert the current system data file for use with the new version.
 1. Start Maintenance Console. (Do not connect to the PBX.)
The appropriate version of Maintenance Console will be selected automatically.
 2. From the **File** menu, select **Open**.
The Open dialog box will be displayed.
 3. Navigate to the folder in which you saved the system data file in Step 1.
 4. Select the file.
 5. Click **Open**.
A dialog box will appear to confirm that you want to convert the data.
 6. Click **Yes**.
 7. Enter a name for the new converted system file.
The system data file will be converted for compatibility with the new version of Maintenance Console, saved, and opened.
 8. From the **File** menu, select **Close**, to close the currently open system file.
 3. Set up the new system version.
 - i. Install the new SD Memory Card.
 1. Turn off the power to the PBX.
 2. Remove the current SD Memory Card from the SD Memory Card slot.
 3. Install the new SD Memory Card.

KX-TDA50

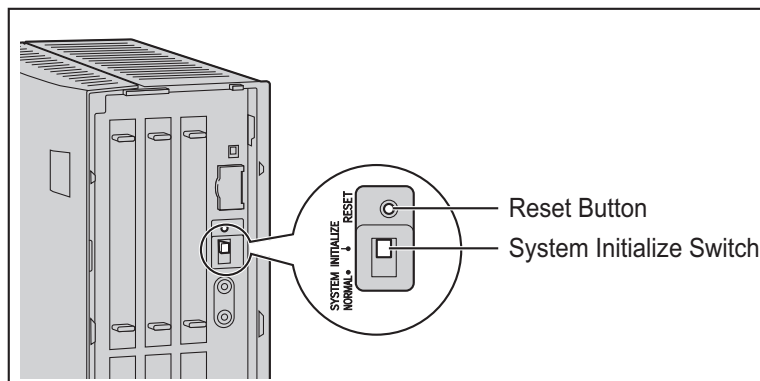


KX-TDA100/KX-TDA200

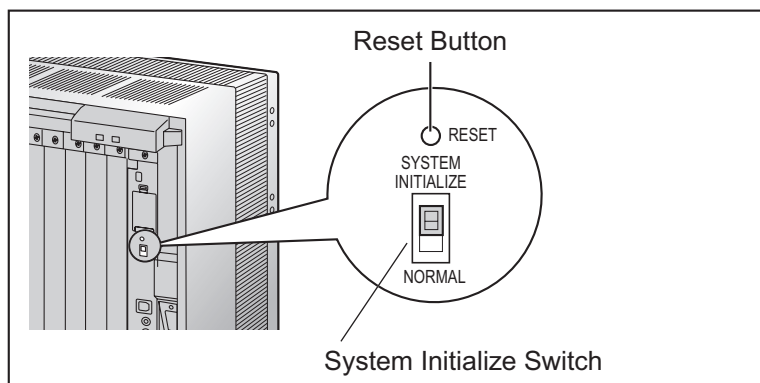


4. Slide the System Initialize Switch to the "SYSTEM INITIALIZE" position.

KX-TDA50

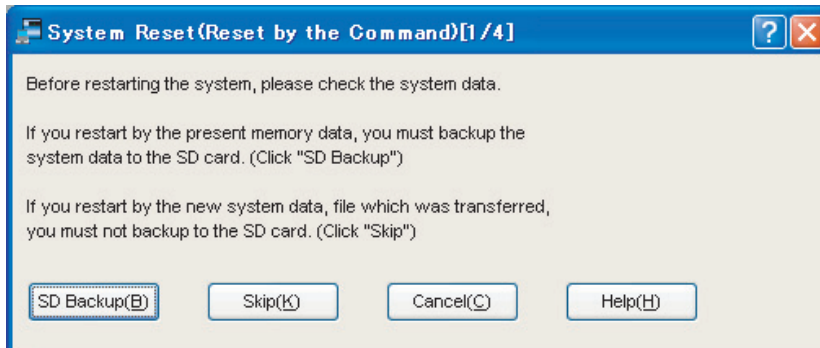


KX-TDA100/KX-TDA200

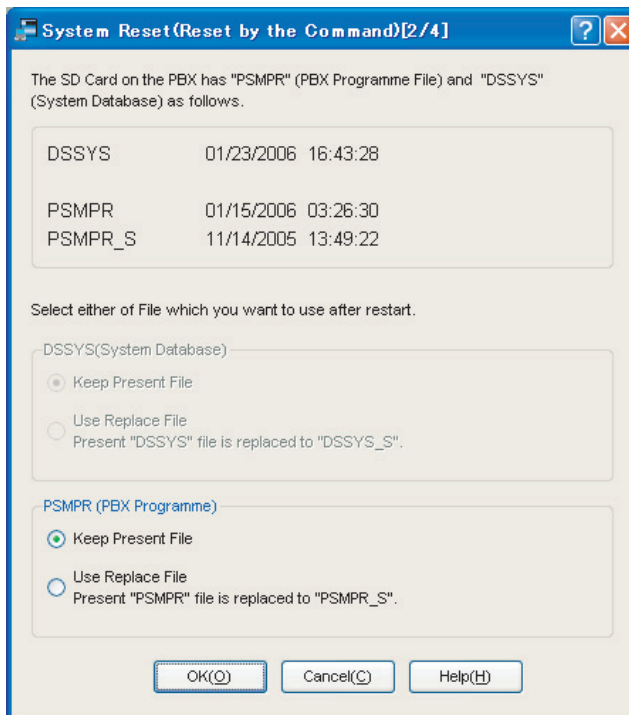


5. Turn on the power to the PBX.
 6. While the RUN indicator is flashing, slide the System Initialize Switch back to the "NORMAL" position.
- ii. Run Quick Setup.
1. Connect to the PBX using Maintenance Console.
Quick Setup will restart automatically.
 2. Set the data items as prompted.
Quick Setup will finish.
- If the contents of the SD Memory Card have not been previously backed up to the PC using an SD Memory Card Reader, it is strongly recommended to back up the feature access file after Quick Setup is complete. Follow the procedure below:
- a. From the **Utility** menu, select **File Transfer PBX (SD Card) to PC**.
 - b. Select **DSKEYSD** (KX-TDA50) or **DKEYSD** (KX-TDA100/KX-TDA200) from the list of files.
 - c. Click **Transfer**.
The Save dialog box will be displayed.
 - d. Navigate to the folder in which you want to save the file.
 - e. Enter a file name.
 - f. Click **Save**.
A window showing the download process will be displayed.
A message will be displayed when the transfer is complete.
 - g. Click **OK**.

4. Restore the user data.
 - i. Transfer the system data file that was converted in Step 2 from the PC to the SD Memory Card.
 1. From the **Utility** menu, select **File Transfer PC to PBX (SD Card)**.
The Open dialog box will be displayed.
 2. Select the converted system data file that was saved in Step 2.
The file will be uploaded to the SD Memory Card as the backup DSSYS/DSYS file (KX-TDA5920: DSSYS_S, KX-TDA0920: DSYS_SUB), and a message displayed when the transfer is complete.
 3. Click **OK**.
 - ii. Set the transferred system data file to be the active file.
 1. From the **Utility** menu, point to **System Reset** and then click **Reset by the Command**.



2. Select **Skip** to continue without backing up current data to the SD Memory Card.



3. Select **Use Replace File** for system data file and **Keep Present File** for MPR file.
4. Click **OK**.
A confirmation screen will be displayed.
5. Click **OK**.
Another confirmation screen will be displayed.

6. Click OK.

The active and backup system data files will be swapped, and the PBX reset.
The upgrade process is complete.

3.2 Data Reset After Upgrade

Data that is stored in the SRAM of the Hybrid IP-PBX (not on the SD Memory Card), among other data, is cleared during the upgrade process.

The data items listed below are all cleared by upgrade.

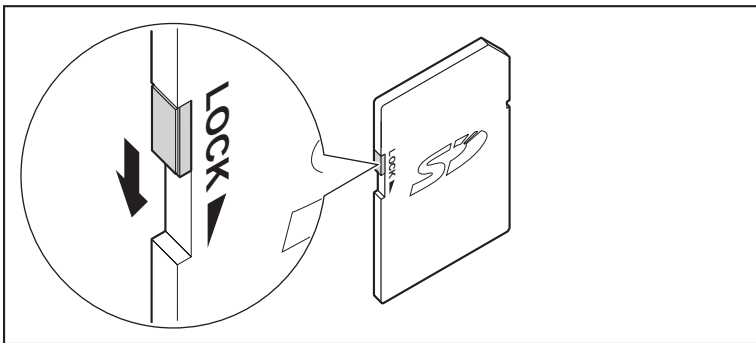
- Incoming Call Log
- Outgoing Call Log (including Last Number Redial)
- Message Waiting
- SMDR
- ICD Group monitor log for supervisor
- PBX date and time
- Timed Reminder
- LPR Timed Update time
- Daily test start time
- PT handset/headset volume
- PT SP-PHONE volume
- PT ring volume
- PT display contrast
- ICD Group login status
(All extensions are set to Login by default.)
- ICD Group Ready/Not Ready status
(All extensions are set to Ready by default.)
- Live Call Screening (LCS) On/Off
- Hands-free Answerback status
- Absent Message status of extensions
(Absent Message data itself is not cleared.)
- FWD/DND status
(FWD destinations are not cleared.)
- Extension Lock/Remote Extension Lock
- Extension PIN Lock/Extension PIN Lock counter
- Verified Code PIN Lock/Verified Code PIN Lock counter
- Password Lock counter for Remote System Programming
- PBX Error Log
- SVM Log and messages (both greeting messages, and voice messages left by callers) recorded on an SVM card (KX-TDA50 only)

4 Restoring a Hybrid IP-PBX to a Previous System Version (KX-TDA50/KX-TDA100/KX-TDA200 only)

The following procedure allows you to undo an upgrade and return to the previous version of system software and data. Use this procedure if the upgrade process did not complete successfully.

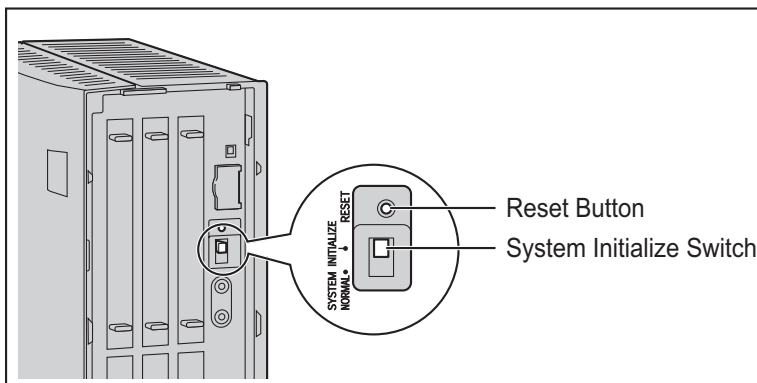
4.1 Procedure

1. Turn off the power to the PBX.
2. Remove the new SD Memory Card that is currently installed in the PBX.
3. Set the lock switch of the previous SD Memory Card for read-only access.

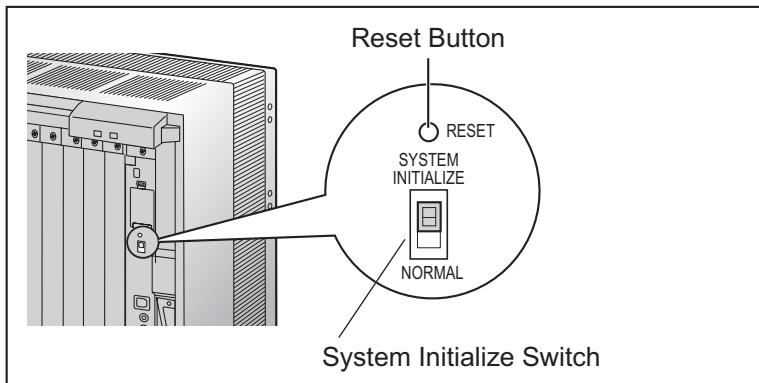


4. Install the previous SD Memory Card in the SD Memory Card slot of the PBX.
5. Slide the System Initialize Switch to the "SYSTEM INITIALIZE" position.

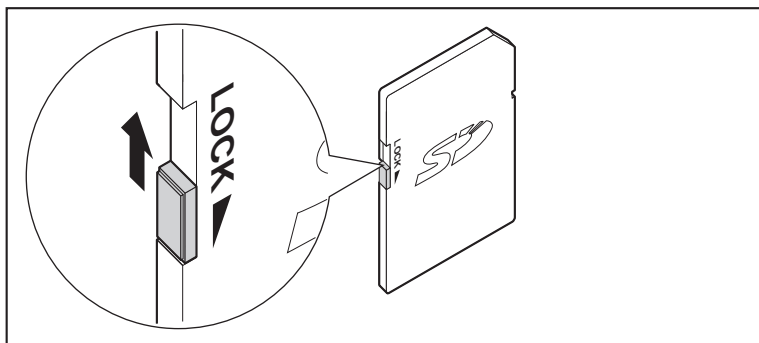
KX-TDA50



KX-TDA100/KX-TDA200



6. Turn on the power to the PBX.
7. While the RUN indicator is flashing, slide the System Initialize Switch back to the "NORMAL" position. Initialization may take about 1 min to 3 min. When initialization is complete, the RUN indicator will stop flashing and turn on.
8. Turn off the power to the PBX again.
9. Remove the SD Memory Card from the PBX, and set the lock switch for read/write access.



10. Turn on the power to the PBX.
The previous version's system data file will be copied from the SD Memory Card to the PBX. The Hybrid IP-PBX has been restored to the previous version. Please note that the data listed in Section 3.2 Data Reset After Upgrade cannot be restored.

**Panasonic Consumer Electronics Company,
Division of Panasonic Corporation of North America**

One Panasonic Way, Secaucus, New Jersey 07094

<http://www.panasonic.com/csd>

Copyright:

This material is copyrighted by Panasonic Communications Co., Ltd., and may be reproduced for internal use only. All other reproduction, in whole or in part, is prohibited without the written consent of Panasonic Communications Co., Ltd.

© Panasonic Communications Co., Ltd. 2006